

Langley Parish Council

Autumn 2011



Core Strategy Consultation 2011 Important - this affects YOU



Maidstone Borough Council wants to know what you think about its Core Strategy. You need to be aware of the implications of the Core Strategy as the Policies it contains will determine the amount, type and location of development within Maidstone until 2026.

The plan includes 10,080 homes to be built between 2006 and 2026, 80% of these in the area around Maidstone, including land adjacent to Park Wood. There are also plans for 11 hectares of land for warehousing at Junction 8 M20, close to Leeds Castle, despite the fact this land is considered by the Planning Inspector to be a significant countryside landscape which protected the scarp slope of the Kent Downs Area Of Outstanding Natural Beauty, and an important green area for leisure and quiet recreation for local people.

Maidstone branch of the Council for the Protection of Rural England (CPRE) believes that Maidstone does not require large-scale high-rise warehousing, which is low wage employment providing only one job for every 100 sq metres of building. The 11 hectares of employment land at Junction 8, they say, is not needed and should be opposed as a threat to the countryside and to the quality of life of local residents.

There is no real protection in the Core Strategy for any of the countryside outside the AONB. The Countryside Policy (CSS) is very short. It does not have, **but could have**, incorporated the concept contained in the now defunct Kent and Medway Structure Plan Policy EN1: "The countryside will be protected, conserved and enhanced for its own sake" and Policy ENV28 of the Maidstone Plan of 2000: "In the countryside planning permission will not be given for development which harms the character and appearance of the area or the amenities of surrounding occupiers" recognising that quality of place contributes to quality of life.

Although there is no development currently planned for Langley, it will be pressing on our borders, so residents need to examine the Core Strategy in detail, take account of the advice from the CPRE (outlined above) and respond to MBC by October 14th, as below.

If you have access to a computer, details about the Core Strategy are available by using Google: Maidstone Core Strategy 2011. Several references will come up including Core Strategy Consultation. You will need to click this and read the first pdf, entitled Core Strategy, which includes a Key Diagram map on page 79. Alternatively, call 01622 602736 and request a questionnaire; email your comments to ldf@maidstone.gov.uk, or write to Spatial Policy team, Maidstone House, King Street, Maidstone ME15 6JQ.

Comments may be made on the contents as published, or on an omission that you think should be included within a policy and not left to "some future document". Policies you need to ask to be included are: **The Kent and Medway Structure Plan Policy EN1: "The countryside will be protected, conserved and enhanced for its own sake" and Policy ENV28 of the Maidstone Plan of 2000: "In the countryside planning permission will not be given for development which harms the character and appearance of the area or the amenities of surrounding occupiers" recognising that quality of place contributes to quality of life.**

By Cllr Cheryl Taylor-Maggio, Chair Langley Parish Plan Action Committee

News in brief ...

- **Biodegradable liners** for your food caddies are now available at the Farmers' Markets - £2 roll of 25.
- **White garden** waste sacks £3.25 roll of 5 - available at the Farmers' Markets.
- **Clerk's Office Hours** : Monday to Wednesday 9am to 3pm - answer phone available at all other times and the Clerk is available at the Farmers' Markets.
- **Farmers' Markets Dates:** Wednesday 12th October, 26th October, 9th November —9.30am to 1.00pm—Langley Village Hall.
- **Christmas Market** - Wednesday 7th December, Langley Village Hall—free mulled wine, mince pies whilst you do your Christmas shopping!
- **Youth Bus** - It's back! Now visits the Village Hall on Fridays at 6.30pm - come and take a look.
- **Who Do I Report It Too?** - Seen a blocked road drain, broken street light, missing street or road signage? Call Nicola, your Parish Clerk on 842461 and she'll sort it!
- **MBC Refuse & Recycling** — Are your waste bins being emptied on the correct day? If not, please let the Clerk know on 842461.

Inside this issue:

<i>Village Hall News</i>	2
<i>Christmas Party</i>	2
<i>Rubbish!</i>	3
<i>Queen's Diamond Jubilee Celebration</i>	4

Village Hall Contacts:- Ray Cuthbert, Chair (07747 833832) David Bennett (861223) - Bookings/Treasurer

Your Village Hall Needs You



The current Management Committee has put a lot of hard work into maintaining the Village Hall, managing bookings and raising money to carry out repairs and improvements.

We are ALWAYS pleased to welcome more volunteers to help fund raise, project manage maintenance jobs, help out at events, etc.

Running the hall is more fun than you might expect, and you have the satisfaction of knowing that you're doing something really worthwhile that benefits many residents of the village.

We are also looking for a Treasurer, due to retirement, so if you're able to look after the halls finances, please do get in touch.

If you can help in any way, please contact Ray on 07747 833832.



Village Hall of the Year 2011

Keith Harrison, Chief Executive of Action with Communities in Rural Kent visited the Village Hall on Friday 2nd September. He advised that we have been short-listed along with 10 other Village Halls in Kent and Medway.

We showed him all our documentation, future plans and walked him around the hall, car park and grounds. We had to demonstrate excellence in four main areas, Governance, Economic, Social and Community & Environment. He was very impressed !

Winners will be announced at the Community Halls Conference on 15th October at Teynham Village Hall.

Wish us luck !!



We are very pleased (and a little smug!) to announce that on the 20th September we achieved all THREE levels of Hallmark !!

Level One shows that we are complying with all requirements of our charitable status.

Level Two shows that we have been assessed in compliance with legislative issues.

Level Three examines the role of the hall in the community and how it interacts with its users and the wider community.

Here are some of the comments from the assessors:

"We found a progressive committee, operating correctly with a policy of renewing fittings as required and a hall kept to a very high standard, we have no hesitation in awarding Hallmark 1,2 and 3.

All three certificates will be presented at an Awards Ceremony on Saturday 15th October.

Well done to the Hall Committee for your hard work !

Fete — How Much ?!

We are very pleased to announce that this year's Summer Fete was a run away success and raised **£1,761.95** which will be used to help with the Village Hall maintenance. Thank you for your support.

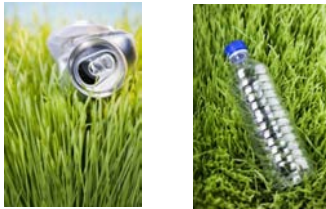
Children's Christmas Party

Saturday 17th December
Langley Village Hall
2pm—5pm

Fun 'n' games, food, Father Christmas and entertainment by MIKI the Clown!

£1 per child

Tickets available November from the Village Hall on Rural Market Days.



The Litter Mystery

Jackie Cassin

Do you collect rubbish along our public footpaths? Well, thank you.

Do you gather litter in our woods—one of the worst areas? A BIG thank you.

Let's help those mystery people by joining them and doing our bit, no matter how small by:-

- Not dropping litter
- Sweeping outside our own home
- Picking up litter in our street
- Alerting the Council or our Parish Clerk of large amounts of litter.

We can make the difference—join *Langley Against Litter*.

Thank you.



This is not a moan about litter in Langley's streets and lanes, nor a moan about people who drop litter. We all know it is wrong to litter our world; children are taught from a young age in school that it is anti-social to throw down their rubbish; yet still it happens.

Maidstone Borough Council rarely sweeps our streets and our footpaths, never. The exception being a fly-past by the mechanical road sweeper, following a complaint by a resident or our vigilant Parish Clerk. So what happens to the litter? Have you ever noticed a piece of rubbish, day after day it lays in the gutter and like a magnet it seems to attract more pieces of litter. As the days go by leaves, dirt and the odd tissue gather around and before you know it a pile has formed. Then, one day you pass by and it has gone. The cans, plastic cartons, crisp bags have disappeared.

So where have they gone? Well, the rubbish left in our recreation ground at the Village Hall is cleared regularly by the contractor who cuts the grass. He does a litter sweep before cutting in order to avoid cans and bottles being broken into lots of sharp and dangerous shards of metal and glass. Of course, this is not free and is paid for by each one of us through the grant the Parish Council receives from our council rates. We also recognise the good work done by the Village Hall Management Committee in keeping the car park clean.

However, what happens to the rubbish outside our homes?

Are you one of the mystery people who sweep the footpath and gutter outside your home? Well, thank you.

Do you pick up litter in your street? Well, thank you.

So, what has the Parish Council been up to?

Well, here's a brief round-up of the last few months activities:-

- Arranged for the red igloo and baby climbing frame in the Play Area to be re-painted. What do you think?
- Fully involved with the Core Strategy consultation with Maidstone Borough Council. Have you responded?
- Liaised with Village Hall Management Committee to organise the celebrations for the Queen's Diamond Jubilee on Monday 4th June 2012. Watch this space, more information to follow.
- The Playing Field maintenance contractor now undertakes a litter pick before mowing. See above!
- Plan to re-plant the gap behind the slide in the children's play area with sixteen 3-4' hawthorns.
- The Clerk is currently investigating to see if the mobile CCTV mast from Shepherds Way can be removed as it obscures the line of sight into Heath Road. Do you agree?
- The Clerk is also in discussion with BT to see if the phone box can be removed. Any objections?
- Meetings with Kent Highways to discuss the possibility and cost implications to locate white wooden village gateways. Any comments?
- Consulted with Kent Highways on the proposed road crossing to be located on the crossroads with Leeds Road, Heath Road and Ulcombe Road. More information to follow
- We received a clean bill of health for the 2010/11 Annual Audit. Top marks !
- Currently trialling a traffic monitoring device on the busy roads in the village. Can you help?
- Continue to arrange Rural Farmers' Markets every other Wednesday. Have you been?
- Liaised with Kent County Council for the return of the Youth Bus, which now visits on a Friday at 6.30pm. Come and take a look !

Is there anything you would like to discuss with the Parish Council? Refer to the back page for contact information - would be good to hear from you !



Contact the Parish Council

Langley Parish Council Nicola Dawkins, Parish Clerk
 c/o The Village Hall 01622 842461
 Horseshoes Lane parishclerk@langley-kent.org.uk
 Langley www.langley-kent.org.uk
 Kent

Here are the current members of your Parish Council:-

David Burton	Chairman
Sue Knowles	Vice Chair
Tony Hayler	Councillor
John Tucker	Councillor
Paul Maggio	Councillor
Jackie Cassin	Councillor
Cheryl Taylor-Maggio	Councillor
Andy Weaver	Councillor
Janet Palmese	Councillor

Parish Council Information



The Parish Council meet on the third Tuesday of every month (except August), 7.30pm in the Committee Room at the Village Hall.

Extraordinary meetings are held should any planning applications or other urgent matters which cannot be held over to the following full Council meeting. The agenda will be displayed on the Parish Notice Boards and the website - members of public are welcome to attend these meetings.

The **Parish Clerk** is available to meet with on the following dates from **9.30am till 1pm - 12th October, 9th November and 7th December** at the Village Hall.

This newsletter is available in large print if required and there is a newsletter reader service available.

PARISH COUNCIL 2011 Meeting Dates

The next Parish Council meetings are detailed below and commence at 7.30pm in the Committee Room, Langley Village Hall:-



- Tuesday 18th October
- Tuesday 15th November
- Tuesday 20th December

FREE COMPUTER CLASSES

Computer Classes are held every other Wednesday in conjunction with the Farmers' Markets, Langley Village Hall and run from 10am to 12pm.

A £2 donation will be requested to help with the hall running costs.

If you're interested in joining, contact Ray on 07747 833832.

Breathe Easy provides support and information for people affected by a lung condition. Breathe Easy groups meet in many different towns and cities across the UK and a new group is being started at Langley Village Hall. The next two meetings dates are **Tuesday 18th October** and **Tuesday 15th November** from **2pm—4pm**. Through the Breathe Easy network, you can meet other people who are also affected by lung disease and who understand how it feels.

Thank You!

The Village Hall Management Committee would like to take this opportunity to thank Ray & Jean from The Plough Public House for the meal and Young & Partners for the car service package donated for the fete raffle. Your support is very much appreciated. Refer to Page 2 to see how much ~~£££~~ was raised.



Farmers' Christmas Market

Wednesday 7th December
Langley Village Hall, 9,30am

Join us for mulled wine, mince pies, Christmas trees, gifts and treats.



Village Celebration

The Queen's Diamond Jubilee Monday 4th June 2012

Hog roast, fancy dress, bar, fireworks
a real village knees up !

Make a note of the date in your 2012 diary.
More information to follow.